



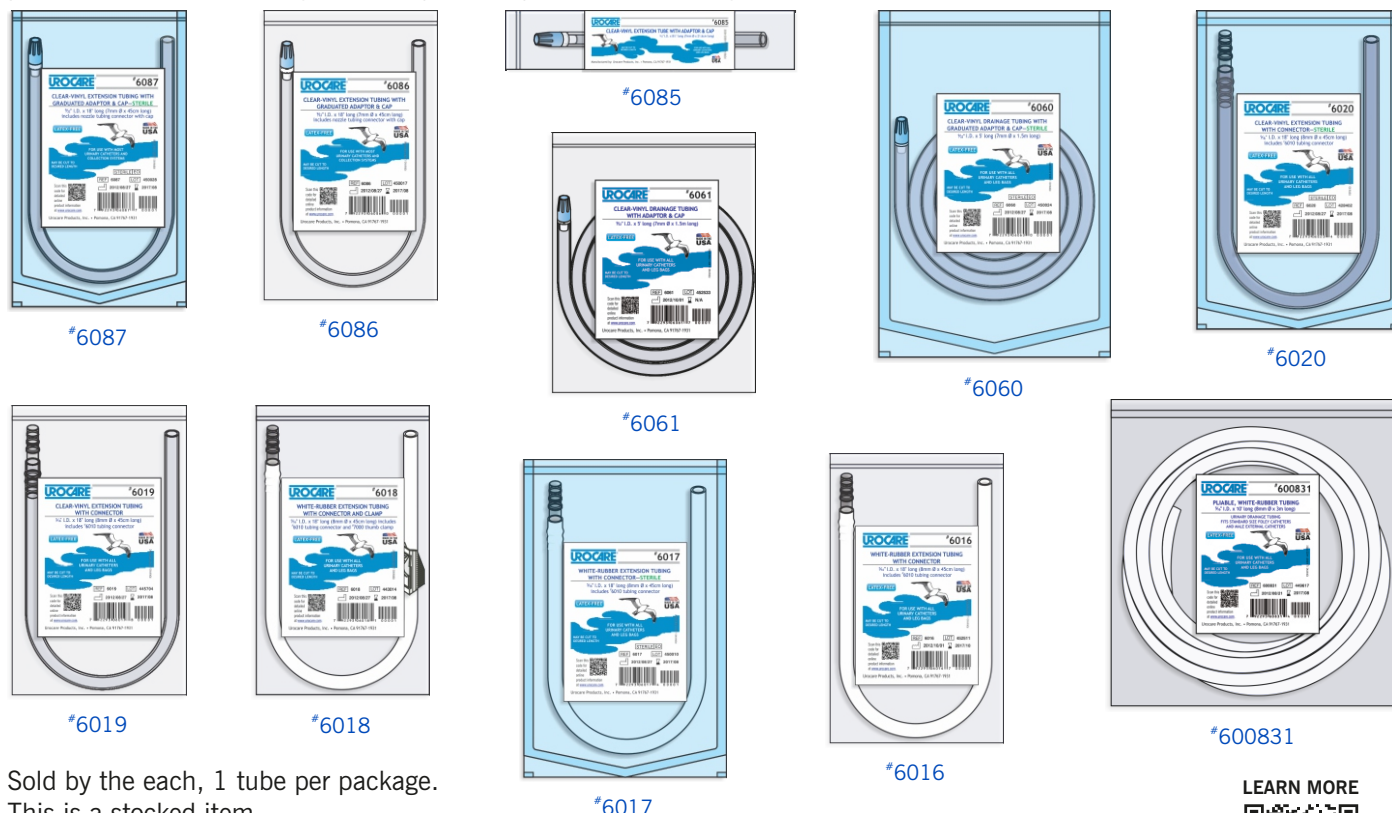
## Drainage and Extension Tubing

For Use with Most Any Urinary or Ostomy Appliance

### Urocure® Clear-Vinyl Drainage & Extension Tubing



May be used as an extension between male external catheters, Foley® indwelling catheters and reusable or disposable urinary drainage bags, bottles or other urinary and ostomy appliances. Provides a snug fit on most standard sized drainage ports/outlets while resisting kinks. May be easily cut to desired length.



Sold by the each, 1 tube per package.  
This is a stocked item.  
See list below for item sterility.  
All are DEHP & Latex-Free.

DEHP-FREE

LATEX-FREE



LEARN MORE



### CLEAR-VINYL DRAINAGE AND EXTENSION TUBING

Item No.	Description	Dimensions†	Sterile	Case Item No.
<b>6087</b>	Tube with Adaptor & Cap	0.28" I.D. x 18" (7mm Ø x 45cm) long	<b>Sterile (EO)</b>	<b>608712</b> (12/CS)
<b>6086</b>	Tube with Adaptor & Cap	0.28" I.D. x 18" (7mm Ø x 45cm) long	Non-Sterile	<b>608612</b> (12/CS)
<b>6085</b>	Tube with Adaptor & Cap	0.28" I.D. x 8.5" (7mm Ø x 21.6cm) long	Non-Sterile	Not Available
<b>6061</b>	Tube with Adaptor & Cap	0.28" I.D. x 5' (7mm Ø x 1.5m) long	Non-Sterile	<b>606150</b> (50/CS)
<b>6060</b>	Tube with Adaptor & Cap	0.28" I.D. x 5' (7mm Ø x 1.5m) long	<b>Sterile (EO)</b>	<b>606050</b> (50/CS)
<b>6020</b>	Tube with Connector (#6010)	0.31" I.D. x 18" (8mm Ø x 45cm) long	<b>Sterile (EO)</b>	<b>602012</b> (12/CS)
<b>6019</b>	Tube with Connector (#6010)	0.31" I.D. x 18" (8mm Ø x 45cm) long	Non-Sterile	<b>601912</b> (12/CS)

### WHITE-RUBBER/SILICONE ELASTOMER DRAINAGE AND EXTENSION TUBING

Item No.	Description	Dimensions†	Sterile	Case Item No.
<b>6018</b>	Tube with Connector (#6010) & Clamp (#7000)	0.31" I.D. x 18" (8mm Ø x 45cm) long	Non-Sterile	<b>601812</b> (12/CS)
<b>6017</b>	Tube with Connector (#6010)	0.31" I.D. x 18" (8mm Ø x 45cm) long	<b>Sterile (EO)</b>	<b>601712</b> (12/CS)
<b>6016</b>	Tube with Connector (#6010)	0.31" I.D. x 18" (8mm Ø x 45cm) long	Non-Sterile	<b>601612</b> (12/CS)
<b>600831</b>	Tubing, Large	0.31" I.D. x 10 ft. (8mm Ø x 3m) long	Non-Sterile	Not Available
<b>600828</b>	Tubing, Medium	0.28" I.D. x 10 ft. (7mm Ø x 3m) long	Non-Sterile	Not Available
<b>600825</b>	Tubing, Small	0.25" I.D. x 10 ft. (6mm Ø x 3m) long	Non-Sterile	Not Available

† Approximate dimensions in inches(in) and centimeters(cm).